

HYUNDAI L&C USA

PRESENTS

CRESCENDO

Premium LVT Flooring



HYUNDAI L&C USA

Hyundai L&C (Living & Culture) is a division of Hyundai Department Store Group. With its acquisition of Hanwha Surfaces in 2018, Hyundai L&C has grown to become one of the leading companies in Korea specializing in building materials.

Hyundai L&C owns several building materials brands including HanStone Quartz, Hanex Solid Surfaces, and Crescendo by Hyundai L&C Flooring, among others. Hyundai L&C's global footprint includes distribution and manufacturing facilities in Korea as well as Canada, the United States, Europe, China and India, and we are accelerating growth by establishing relationships with a variety of global enterprises.

Hyundai L&C is focused on innovation, driven by the lifestyles of our customers and design trends in order to fulfill our simple mission of creating happy customers and a more abundant world. We seek to create a new interior culture by leveraging our global reach, dedicated associates and advanced engineering and design capabilities.

With US headquarters in Atlanta, Georgia, Hyundai L&C USA is strategically positioned to serve the North American market from its base near the flooring capital of the world.

ADVANTAGES OF CRESCENDO FLOORING

DURABILITY: Our LVT flooring features an embossed and coated top surface layer that resists scratches and scuffs. In addition, it is built to hold its shape in high-traffic areas, boasting improved residual indentation and dimensional stability.

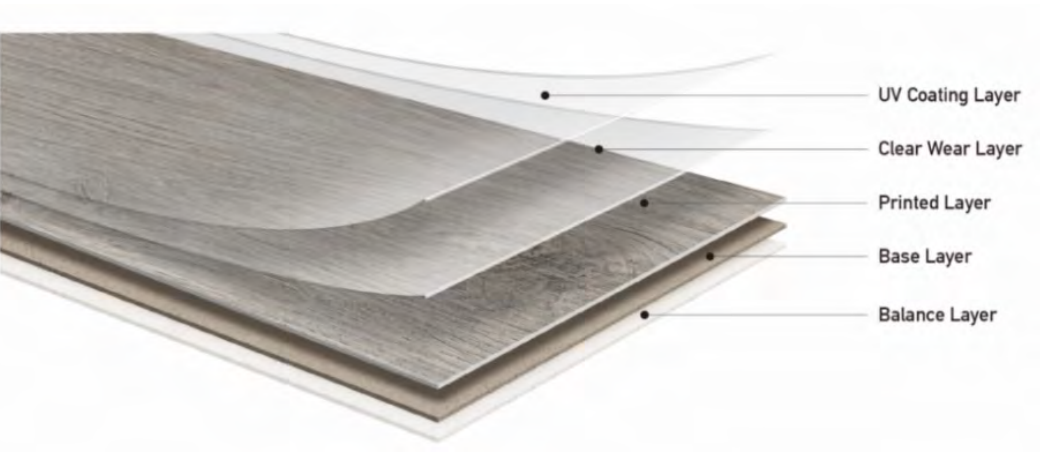
REALISTIC: High-definition printing results in a look that is truly authentic and stylish. We offer a wide range of designs, colors and sizes from which to choose, including those shown in this brochure and many others, including a wide selection of popular wood look designs.

EASY MAINTENANCE: Easily cleaned by using a damp mop for general cleaning, or spot cleaning with a damp towel, our LVT flooring does not require the use of harsh chemical cleaners.



STRUCTURE AND SPECIFICATIONS

CRESCENDO LVT flooring features superb residual indentation and dimensional stability, allowing it to maintain its shape even at extreme temperatures. Additionally, Hyundai L&C USA offers underlayment to enhance cushioning, sound absorption and installation.



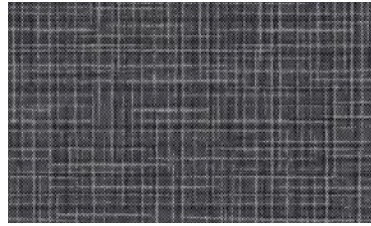
	THICKNESS (MM)	WEAR LAYER (MM)	WEAR LAYER (MIL)		FLOORING DIMENSIONS
LVP - Dryback	2.0	0.15	6	Recycled	12" x 24"
LVP - Dryback	2.0	0.30	12	Recycled	12" x 24"
LVP - Dryback	2.5	0.30	12	Recycled	12" x 24"
LVP - Dryback	2.5	0.50	20	Recycled	12" x 24"
LVP - Dryback	3.0	0.50	12	Recycled	12" x 24"
LVP - Dryback	3.0	0.50	20	Recycled	12" x 24"
LVP - Dryback	5.0	0.50	20	Recycled	12" x 24"

* Additional sizes such as 7"x48" available upon request.
* Loose lay with non-slip backing available upon request.
* Virgin material available upon request.

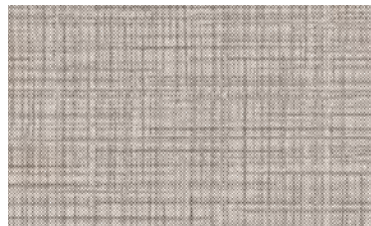
NOBLE

A study in elegance, NOBLE is quiet yet bold, adding an air of confidence to any space.

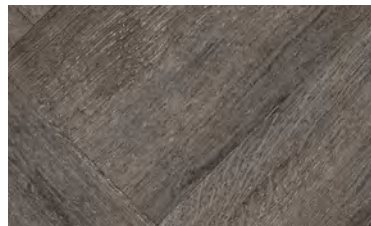
CRESCENDO



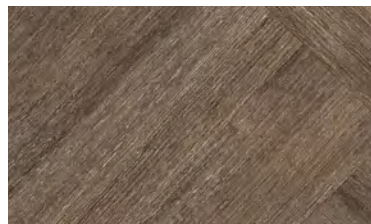
POPLIN



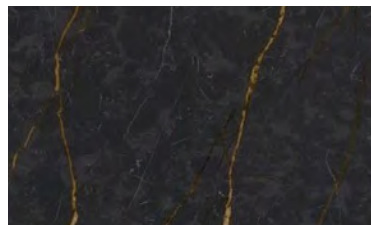
TWEED



ESTATE



MANOR



IRON



TWEED

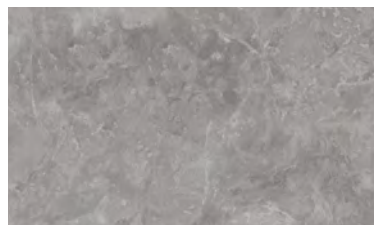
EXTRACT

An exploration of texture, EXTRACT re-envision's rugged forms as soft, fluid finishes.

CRESCENDO



PLASTER



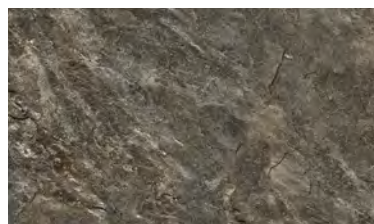
BOULDER



GYPSUM



RUST



FOSSIL



BOULDER

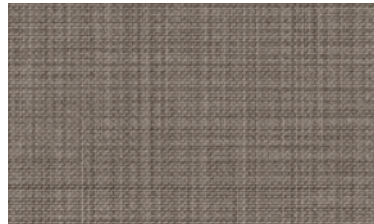
CRAFT

Drawing inspiration from art,
CRAFT explores authentic
techniques and raw materials.

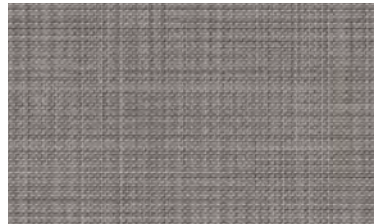
CRESCENDO



VARNISH



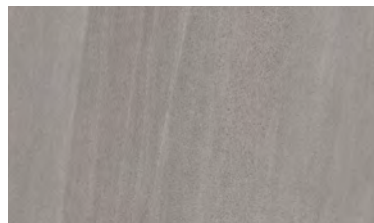
KNIT



WOVEN



SOFTEN



BLEND

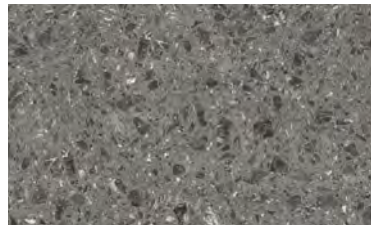


BLEND

MINED

Inspired by classic architecture,
MINED explores the timeless
nature of ancient structures.

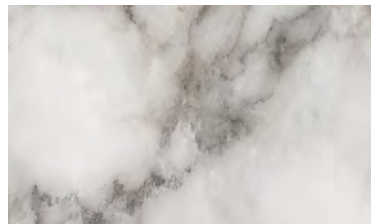
CRESCENDO



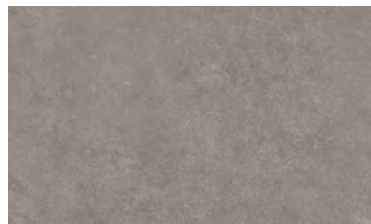
GRAVEL



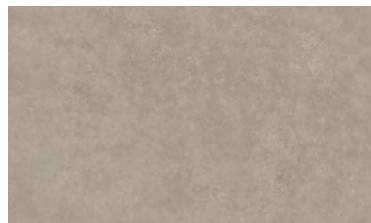
GRIGIO



CLASSICO



CONCRETE



CLAY



GRIGIO

HYUNDAI L&C USA

2839 PACES FERRY RD. SE, STE 1100
ATLANTA, GA 30339

FLOORING@HYUNDAILNCUSA.COM

888.426.9421

